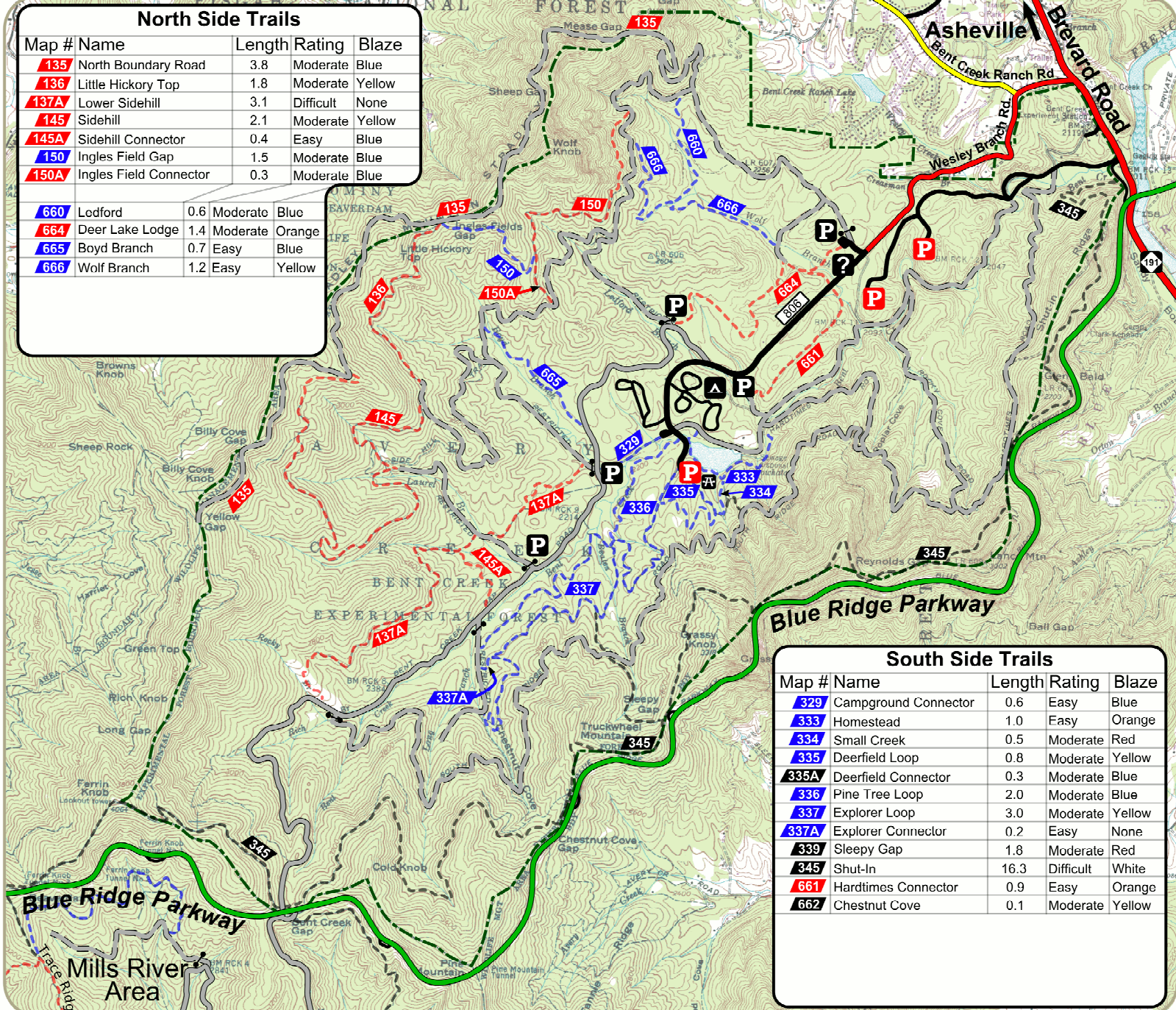


North Side Trails

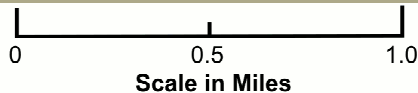
Map #	Name	Length	Rating	Blaze
135	North Boundary Road	3.8	Moderate	Blue
136	Little Hickory Top	1.8	Moderate	Yellow
137A	Lower Sidehill	3.1	Difficult	None
145	Sidehill	2.1	Moderate	Yellow
145A	Sidehill Connector	0.4	Easy	Blue
150	Ingles Field Gap	1.5	Moderate	Blue
150A	Ingles Field Connector	0.3	Moderate	Blue
660	Ledford	0.6	Moderate	Blue
664	Deer Lake Lodge	1.4	Moderate	Orange
665	Boyd Branch	0.7	Easy	Blue
666	Wolf Branch	1.2	Easy	Yellow



South Side Trails

Map #	Name	Length	Rating	Blaze
329	Campground Connector	0.6	Easy	Blue
333	Homestead	1.0	Easy	Orange
334	Small Creek	0.5	Moderate	Red
335	Deerfield Loop	0.8	Moderate	Yellow
335A	Deerfield Connector	0.3	Moderate	Blue
336	Pine Tree Loop	2.0	Moderate	Blue
337	Explorer Loop	3.0	Moderate	Yellow
337A	Explorer Connector	0.2	Easy	None
339	Sleepy Gap	1.8	Moderate	Red
345	Shut-In	16.3	Difficult	White
661	Hardtimes Connector	0.9	Easy	Orange
662	Chestnut Cove	0.1	Moderate	Yellow

Bent Creek Area








Special Information

Please stay on maintained trails and out of Forest Service research areas to ensure continued recreational use of the Bent Creek area.

Trail Types

- Hiking 
- Hiking & Mountain Biking 
- Hiking, Mountain Biking & Equestrian 
- Paved Road 
- Gravel Road 

Other Symbols

-  Pay Parking
-  Free Parking
-  Picnic Area
-  Campground
-  Information